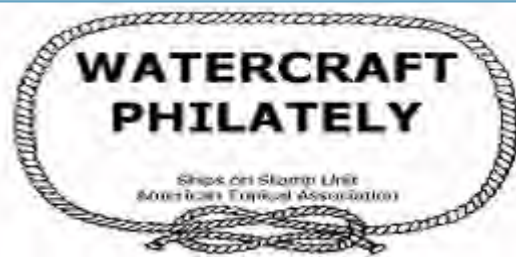


July August 2015



## Life on the water: rescue challenges



The **SEVERN**-class was first introduced in to service in 1996, although the prototype was built in 1992, and in total 46 examples were built by Green Marine and then being fitted out by Berthon Boat Company, VT Halmatic, Souter Marine or FBM Marine. They normally carry a three-metre, two-man Y-class inflatable dinghy with a 15hp outboard engine. The final boat of class left Green Marine's Waterloo Road Factory in Lymington on Dec. 15, 2003 for fitting out at the nearby Berthon Boat facility.

In 2009, it was announced that studies had been undertaken and that the hull-life would be extended to 50-years and the fleet would be re-engineered. These were first to be fitted with MTU 150hp model 10V2000 M93 engines. The first boat to undergo this was 17-46 in early 2009.

The **SEVERN**-class has a sheerline that sweeps down for ease of survivor recovery. She is inherently self-righting and if knocked over in extreme weather, will automatically right itself within a few

seconds. Her propellers and rudders lie in partial tunnels set into the hull that, along with the two bilge keels, provide excellent protection from damage in shallow water.

In addition to her twin engines, the **SEVEREN** is fitted with a hydraulic-powered bow thruster for improved manoeuvrability.

Other equipment includes a portable salvage pump carried in a watertight container.

### Inside this issue:

Search & Rescue	1
New Listings	5
Sailing Ships	11
Book Review	13
Navy Vessels	14
Ditty Box	15

**DAVID AND ELIZABETH ACLAND, RNLB (1243)** (lifeboat)  
Maldives Islands # (2013) R160 (in margin)

**1999 – Royal National Lifeboat Institution (RNLI); Green Marine Ltd., Lymington, Hampshire, U.K. (fitted out by FBM Marine, Cowes); Displ. 40-tonnes; 17m x 5.5m x 1.38m; 2 x Caterpillar 3412 (1250-hp), 25-kn, Range 250-nm; Construction Fibre Reinforced Composite; Crew of 6; Survivor capacity: Self-righting – 28, Non self-righting – 124.**

She was based on station at Newhaven, East Sussex, England, in October 1999 and was named after David Acland DL who was a member of the RNLI's Committee of Management for 34 years and its chairman from 1996-2000. She was built at FBM Marine Ltd. of Cowes, and placed on station in October 1999. She is the 21st of the **SEVEREN**-class boats built. The cost of £1.8 million was funded from a number of generous bequests from Phyllis Backshall, Elizabeth Mary Baldwin, William Charles Holman, Margaret Evelyn Tatham Lamb, Mabel Grace Stapleton, Noel Dudley Sutton, Dorothy Agnes Wood, Thirza Ellen Ivy Young and others.

Some of her recent launches include:

- On Jan. 8, 2014 – Solent Coastguard (CG) paged our Lifeboat Operations Manager (LOM) requested assistance for a 12m local fishing vessel which had become caught on its own fishing gear. The vessel was approximately 7NM SSE of Newhaven and had two persons on board. Having checked that there was no gear

Continued on Page 2