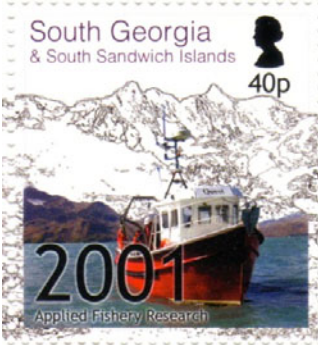


Anyone with information on the ship on this stamp? The boats name is QUEST.



## “There’s a Boat in the Morning! – Isle of Man Steam Packet Company 175<sup>th</sup> Anniversary.

Isle of Man Post has issued a set of eight stamps which commemorate the 175th Anniversary of the Isle of Man Steam Packet. The Steam Packet Company has served the Island well and has the proud distinction of being the oldest continuously operating passenger shipping company in the world.

Often referred to as the ‘Island’s lifeline’, its value can never be underestimated as one of the most important parts of our Island’s infrastructure.

### MONAS ISLE (I) (side-wheel passenger packet)

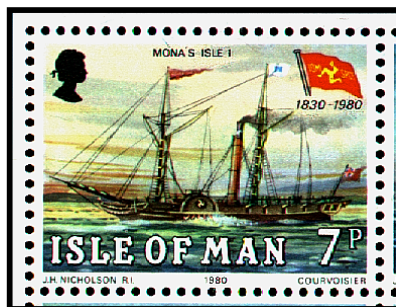
Isle of Man #168 (1980) 7p; # (2005) 26p

**1830 - Isle of Man Steam Packet Co., Douglas, Lo.M.; Robert Napier (John Wood), Glasgow on the Clyde River, England; L. June 30, 1830; Gt. 200; 116' (pp) x 19' x 10'; schooner-rigged, side-wheel packet, engine of 100 hp, 8,5 kn; passenger accommodations; no cargo.**

She was a wooden hulled paddle steamer, and on Aug. 1, 1830, she arrived at Douglas, on her first trip, and proved to be an immensely popular ship during her 21 years of service. She was exceptionally fast for her day, usually making the crossing from Douglas to Liverpool in about eight hours. She was sold in 1851 for £580.

In later years Robert Napier said that he was largely indebted for his prosperity and reputation to the name made for him by this ship.

Source: *Lloyd's; Sea Breezes*, 1946 to date; *Journal of Commerce*, Liverpool; U.S. Navy, *Dictionary of American Naval Fighting Ships*; R.J. Pollard; *WP* 27:15; D. Tilbury, I.O.M. Post.



### VIKING / VINDEX, HMS (seaplane carrier)

Isle of Man #110 (1978) 7p; # (2005) 26p

**1905 - British Navy; Armstrong Whitworth & Co., Newcastle-on-Tyne, England. L. March 7, 1905; 2,950 tons; 350.4'pp x 42' x 16.1'; 3 Parsons turbs., 11,000 shp, 3 screws, 23 kn. Arm: 4-12 pdrs., 1-6 pdr. M guns; 7 aircraft; 1,600 passengers.**

Built as **VIKING** for the Isle of Man Steam Packet Co. (Gt. 1,951, nt. 827). She was requisitioned by the British Navy and converted to a seaplane carrier.



seven aircraft.

The first land-plane to take off from a British Navy ship was from her deck on Nov. 3, 1915, made by a Bristol Scout. She served at the Nore, Harwich from 1915-18, then in the Mediterranean until 1919, before being sold back to the I.o.M. Stm. Pkt. Co. on Feb. 12, 1920.

*(There’s a Boat, continued on page 2)*